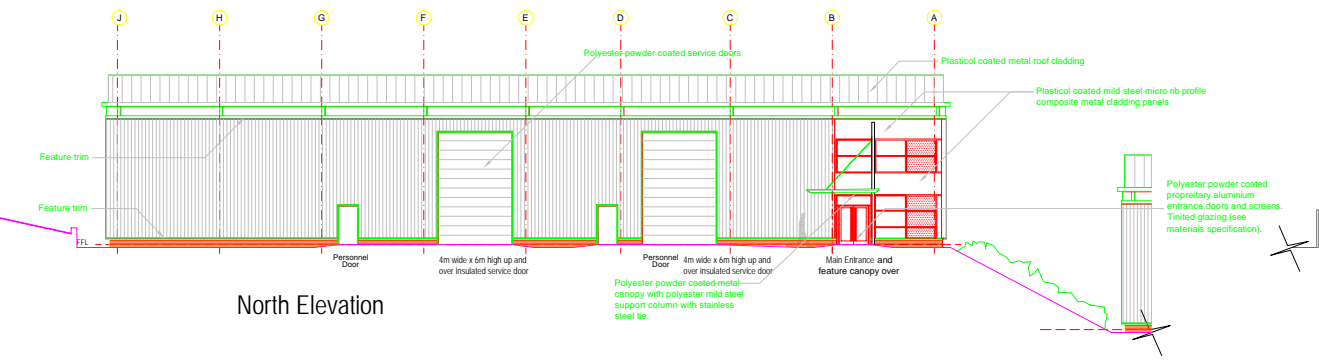
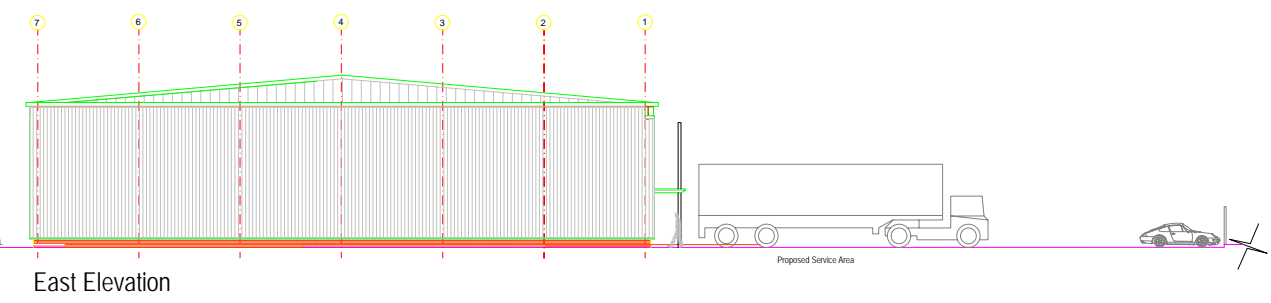


This drawing is copyright and may not be reproduced in whole or part without written authority. Do not scale off this drawing.

REVISIONS		
A	Elevations added.	22/07/04 JAI
B	Building reconfigured	31/08/04 JAI
C	Building reconfigured	22/11/04 ASR
D	Title amended	29/11/04 ASR
E	Notes added. Elevations amended.	08/02/05 ASR
F	Elevations amended in line with site plan.	03/03/05 ASR



North Elevation



East Elevation

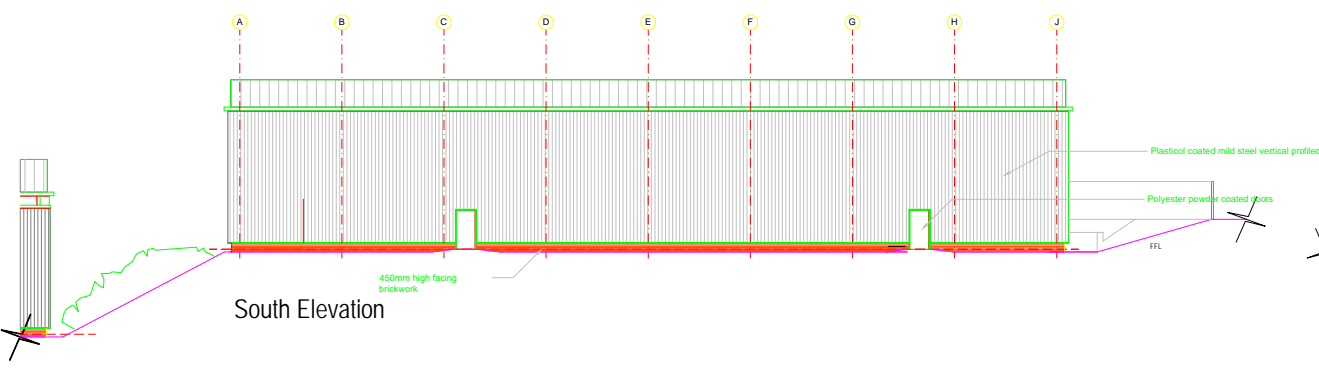
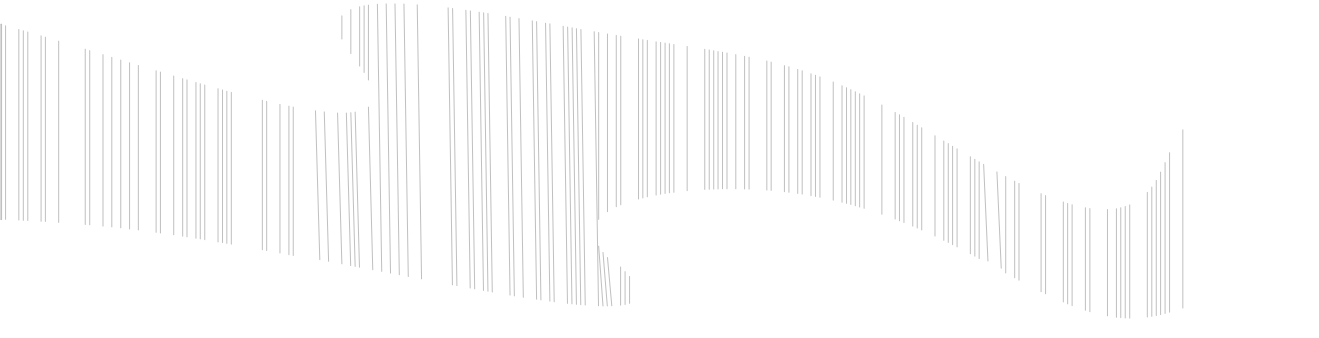
Materials Specification

Roof:
 Plastisol coated profiled metal roof cladding.
 Plastisol coated pressed steel front feature flashing and profiled soffit sheets.

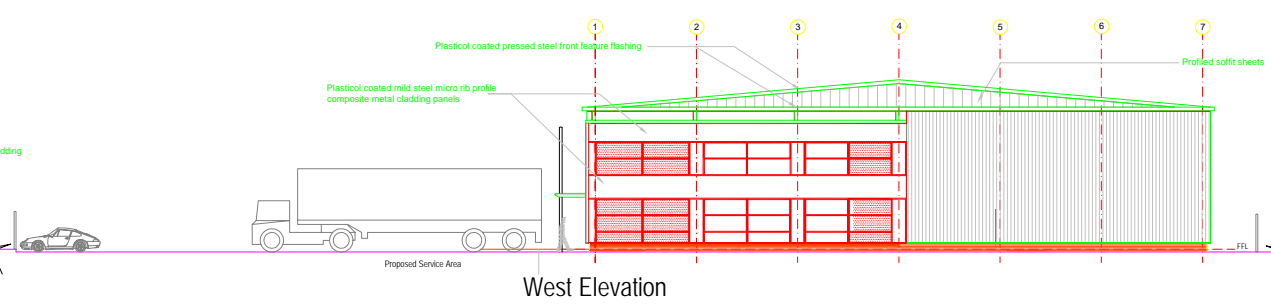
External Walls:
 450mm high facing brickwork.
 Plastisol coated mild steel micro rib profile composite metal cladding panels with feature trims to heads and cills.
 Plastisol coated mild steel vertical profiled cladding.

Windows and Doors:
 Polyester powder coated proprietary aluminium entrance doors and screens.
 Glazing to be proprietary evacuated double glazed tinted units.
 Polyester powder coated 3m x 6m high service doors.
 Polyester powder coated mild steel fire exit doors.

Entrance Canopy:
 Polyester powder coated metal canopy with polyester powder coated CHS mild steel support column with stainless steel tie.



South Elevation



West Elevation

PROPOSED 15,000 SQ FT UNIT ELEVATIONS

PROJECT
 Proposed Development
 Holbrook Business Park
 Holbrook
 Sheffield

CLIENT
 Shepherd Developments Ltd

TITLE
 Proposed 15,000sq ft Unit Elevations

JOB NO 7175	SCALE 1:200@A1	REVISION F	DRAWN James I
----------------	-------------------	---------------	------------------

CAD FILE REFERENCE
 J:\7001-8000\7175\08B

2 ST. JOHNS NORTH
 WAKEFIELD WF1 3QA
 Tel. (01924) 291800
 Fax. (01924) 290072
 @harrispartnership.com
 Offices also at:
 Manchester, Reading,
 Milton Keynes.



ARCHITECTS

PROJECT MANAGERS • INTERIOR DESIGNERS